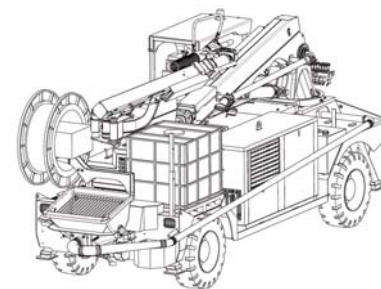
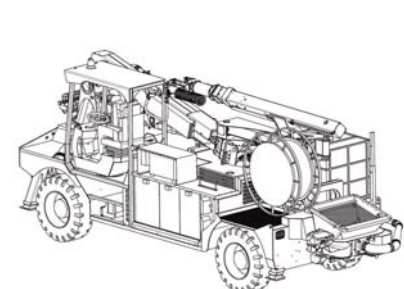
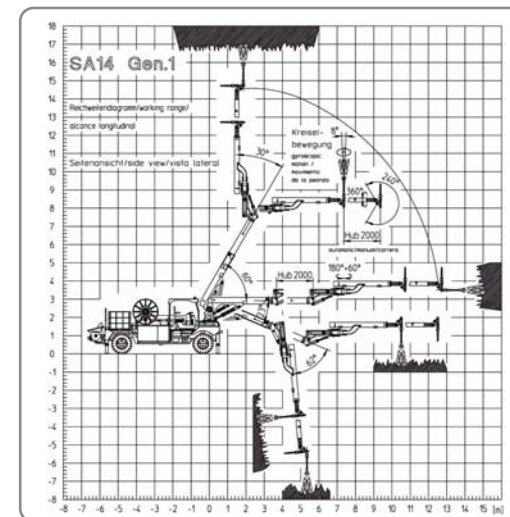
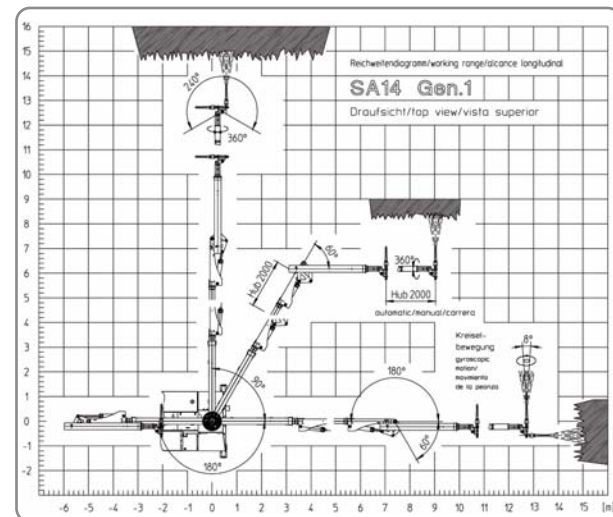


Telescope spraying arm

Sika® - PM500	
Operational range	4,5-16 m
Motor output	15 kW
Remote control	15 m cable
Working lights	2 x 750 W
Automatic horizontal levelling	automatically keeps the boom carriage in the same angle with the horizontal position
Automatic control for boom carriage	control function for automatic travelling (extend/reverse) of the second telescopic arm

Optional accessories

Sika® - PM500	
Wireless remote control	
100 m cable	
Automatic greasing	



The content of this document has been designed with the utmost care, nevertheless the absolute precision of the contained information of the lack of mistakes can not be assured, therefore this is not to be considered as an entailing document but as an informative one. All orders are accepted subject to our current terms of sale and delivery. We reserve the right to make technical and construction modifications. The values written within express performance under optimal theoretical conditions. Please refer to the machines technical documentation for maintenance and operation instructions.

Sika® - PM500

Technical data



Universal concrete spraying system

Thanks to its large working range, the Sika®-PM 500 concrete spraying system is very suitable for medium and large tunnels, caverns and high slopes. The carrier has an optimal ground clearance and therefore suitable for steep slopes.

Uses:

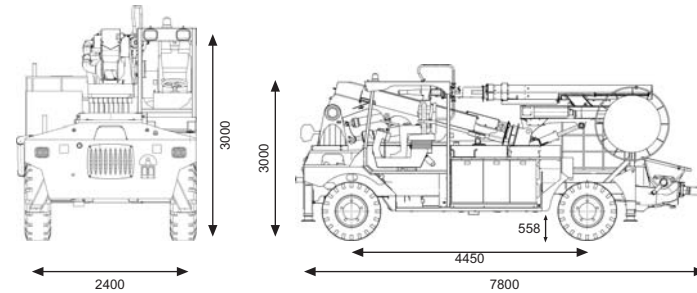
The modular concept allows the following combinations:

- Telescope spraying arm SA 14
- Concrete spraying machine twin piston, Ø180 mm, stroke 1000 mm
- Liquid dosing unit
- Additive tank (1000 l)
- Water tank for cleaning (195 l)
- Cable reel with 50 m
- The operation of the spraying system is done by a cable remote control. An optional wireless remote is available. Cable control is especially useful for environments with Radiofrequency hazard

Dimensions

Sika® - PM500

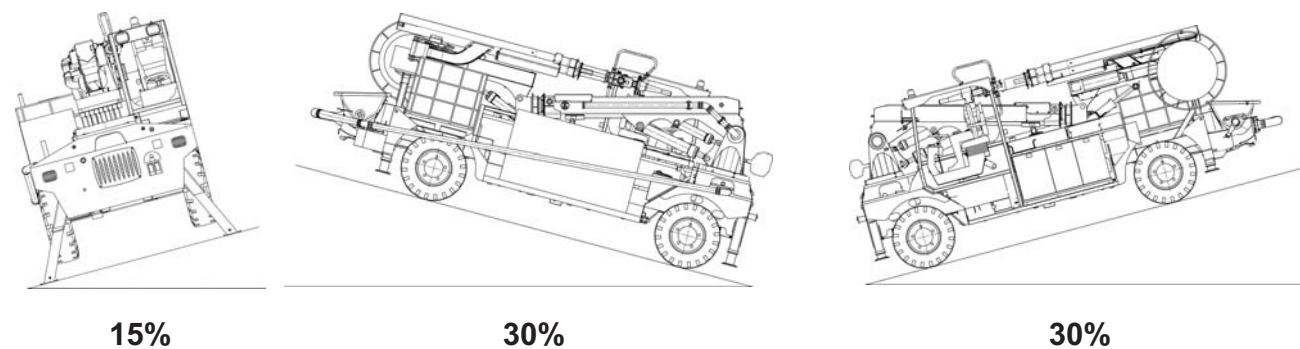
Length	approx. 8000 mm
Width	approx. 2400 mm
Height	approx. 3000 mm



Carrier driving mechanism

Sika® - PM500

Engine	diesel motor
Motor output	75kW, compliance with EPATier3
Steering	hydraulic powered 4-wheel steering
Cooling	water
Transmission	hydrosactic transmission with automatic adjustment for 4-wheels drive
Travel speed	0-18 km/h
Braking system	<ul style="list-style-type: none"> service brake: hydraulic multi-disk brakes in oil bath for 4 wheels parking and negative brake: hydraulic multi-disk brakes in oil bath for 2 wheels
Turning radius	<ul style="list-style-type: none"> inner: 2,6 m outer: 6,1 m
Travel direction	bi-directional travel, the operator's seat can swivel 180°
Ground clearance	0,5 m
Climbing ability	<ul style="list-style-type: none"> longitudinal: 30% (SAE Norm) cross-sectional: 15% (SAE Norm)



Operation

Additive dosing unit

Motor output	1,1 kW
Conveying output	30 - 700 l/h
Conveying pressure	máx. 1,5 Mpa
Operative pressure limit	1,05 Mpa

High pressure cleaner

Drive	electric
Motor output	5.5 kW
Conveying output	15 l/min.
Conveying pressure max.	200 bar

Cable reel

Voltage	400 V 50 Hz 440 V 60 Hz
Cable length	50 m
Rolling on	hydraulic
Rolling off	hydraulic

Air compressor

Model	PM 77E
Type	electric drive, screw-type compressor, mounted on carrier
Electric motor	75 kW
Output pressure	0,7 Mpa
Optimal air delivery	9m³/min +/- 5%

Concrete spraying pump

Twin piston pump

Model	PM BSA 1005
Type	hydraulic cylinders driving long stroke piston concrete pump and S-tube, hydraulic motor drive agitator in hopper, grill with electric vibrator, emergency stop switch
Hydraulic cylinders	<ul style="list-style-type: none"> diameter: 110 mm stroke: 1000 mm
Concrete cylinders	<ul style="list-style-type: none"> diameter: 180 mm stroke: 1000 mm
Pumping capacity	4-30 m³ /h
Concrete conveying pressure	Max. 7,5 Mpa
Motor output	37KW

